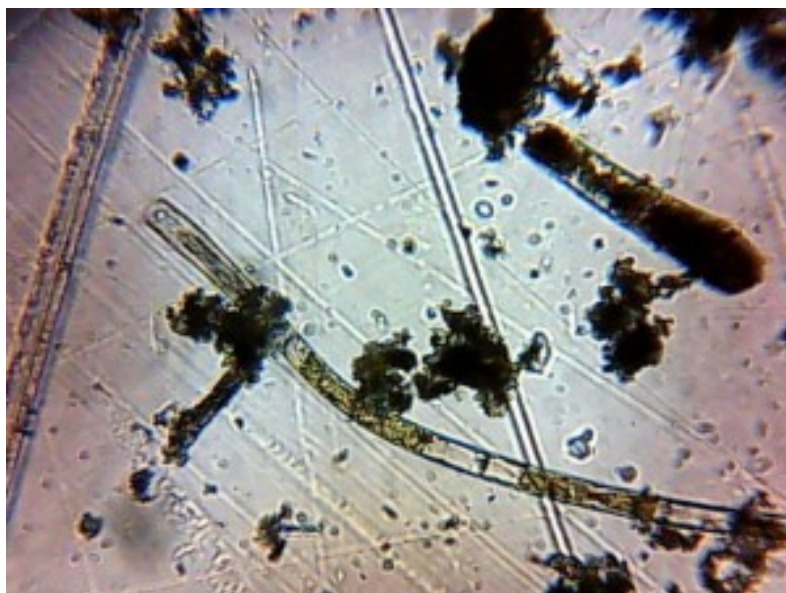


*Little Life Saver MiniScope*



*MiniScope*



*Mit dem MiniScope aufgenommenes Bild (ca. 200x, Auflösung 1.25 um)*

*Mit dem MiniScope aufgenommener Film*

## How To Build a MiniScope

## How To Build a MiniScope



Parts in you need to build the MiniScope (the MiniScope-DIY-Kit). The webcam is a Logitech C210. This cam fits nicely. Basically you can take any cam you like. The plastic parts are laser cut from acrylic.



First remove the housing of the webcam an have look inside.



Then completely remove the electronics from the housing. Cut the plastics to remove the connecting wire.



Now glue "support" piece to the "base" plate using some plastic or hot glue. Bend the "stand"-part to an 90 degree angle just above the slit (see picture below)



Use a hot air blower to heat the plastic.



Now screw (or glue) the electronic part (printed circuit board) to the base plate. Put two spacers in between (10mm).



Unscrew the lens from the camera, flip it around and carefully glue it back on centered.



Attach the "support"-piece to the base using two M3-screws.



Screw in the focus adjustment screw with the thumb wheel.  
You may add a white LED-light for additional illumination. To do so you may remove the small LED on the electronic board and connect the new LED instead.



Connect the MiniScope to a computer by the USB connection.

