

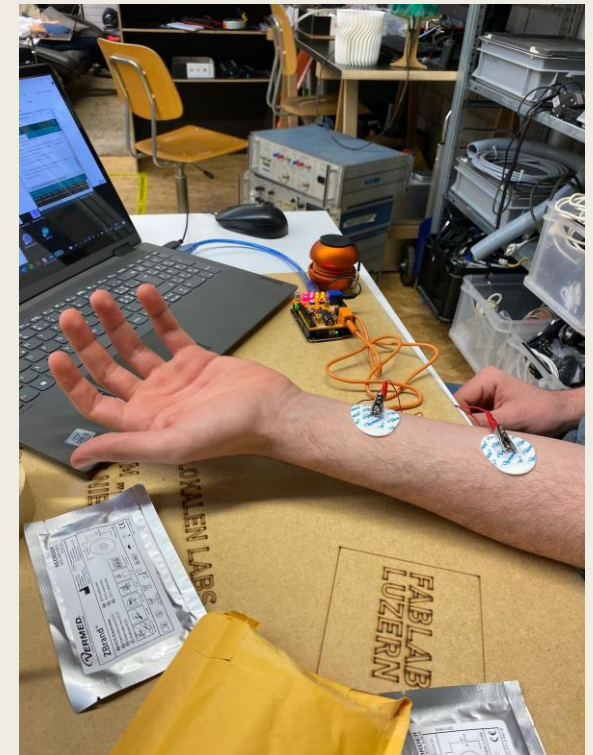
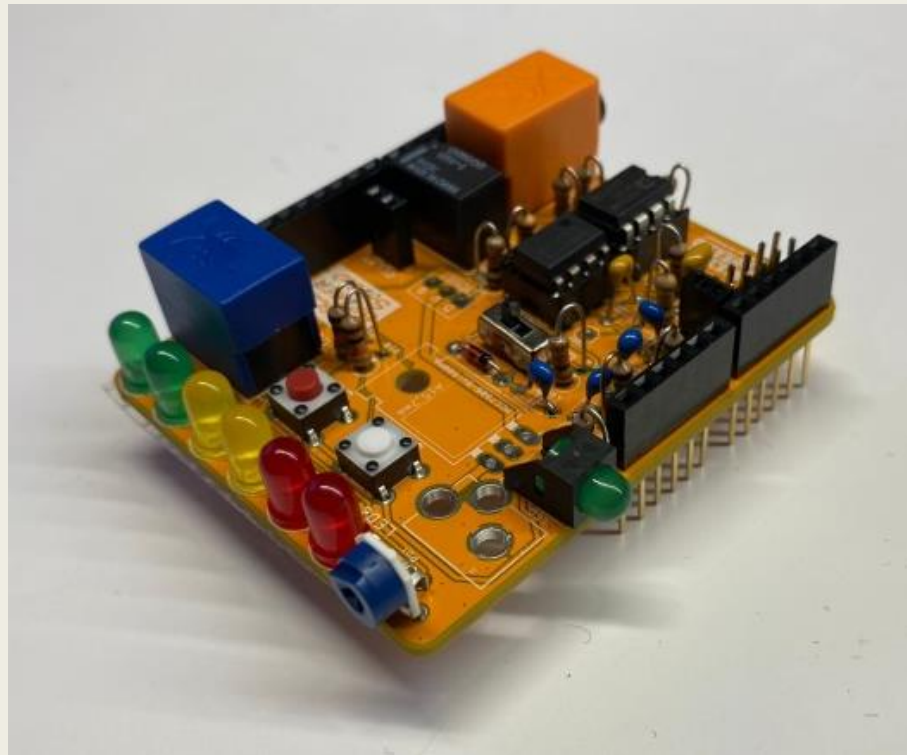
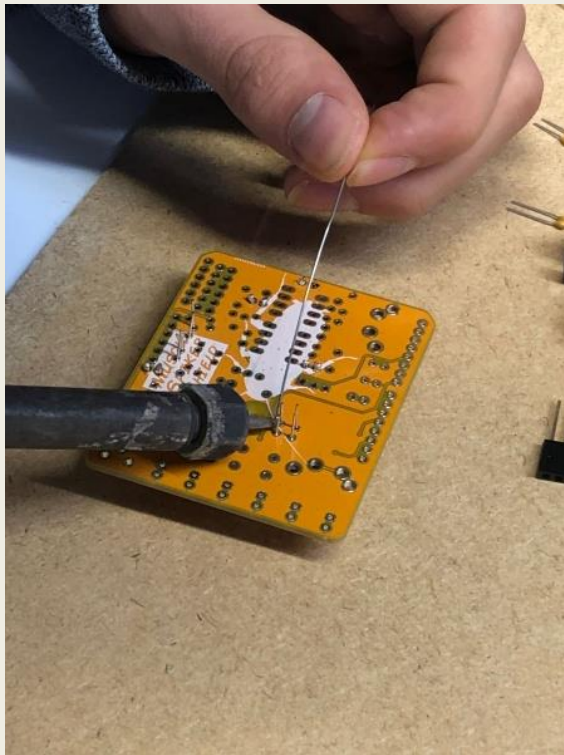


MEDTECH DIY

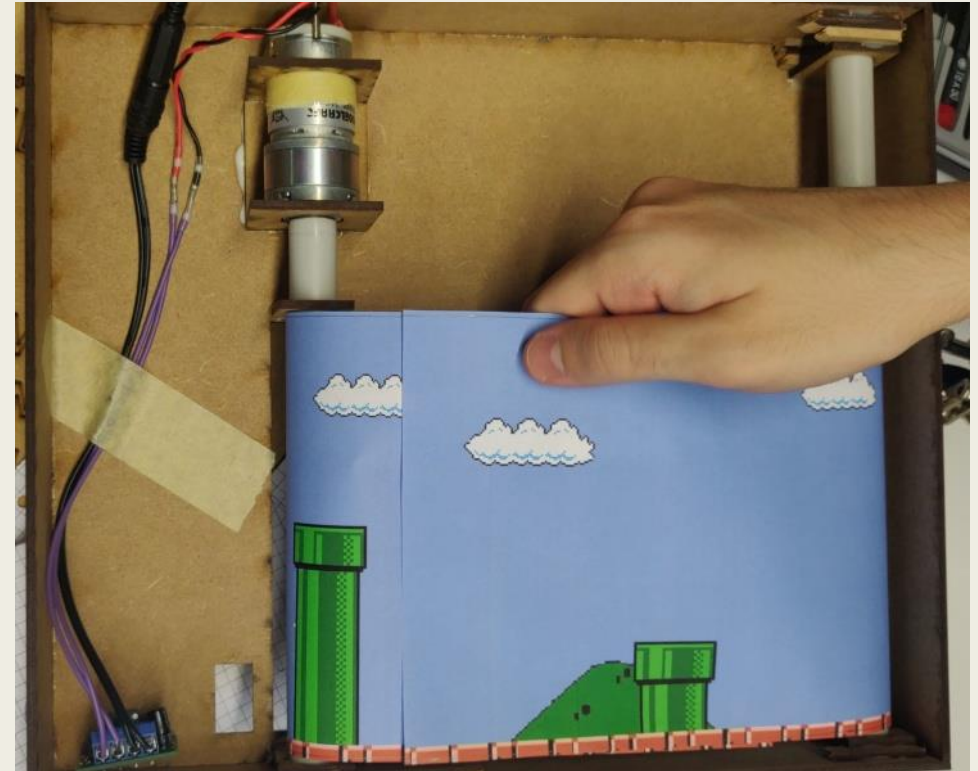
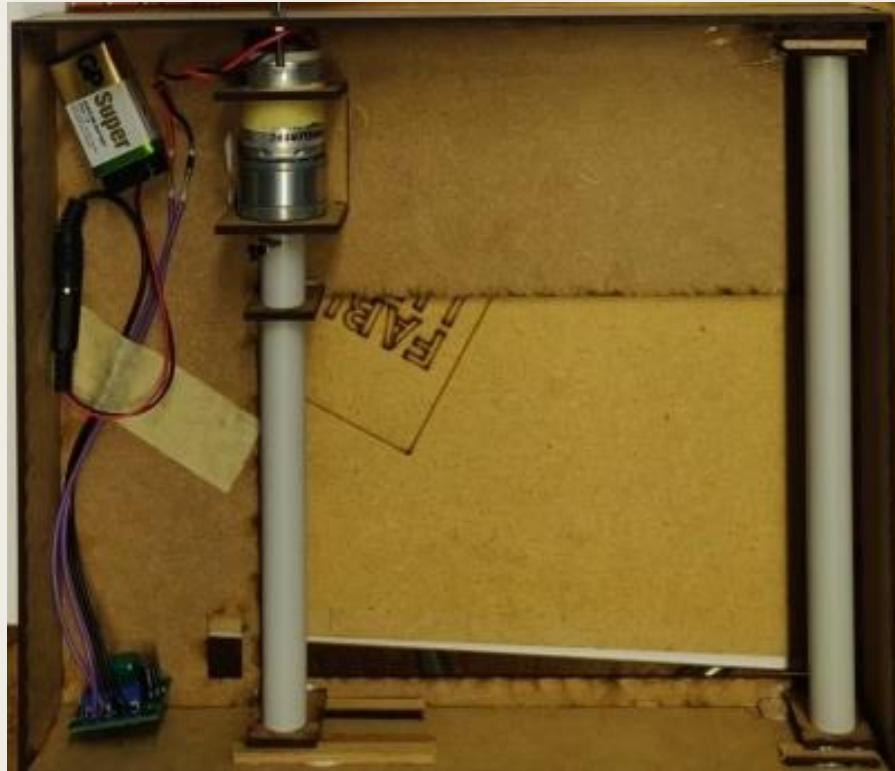
Team E-gewinnt



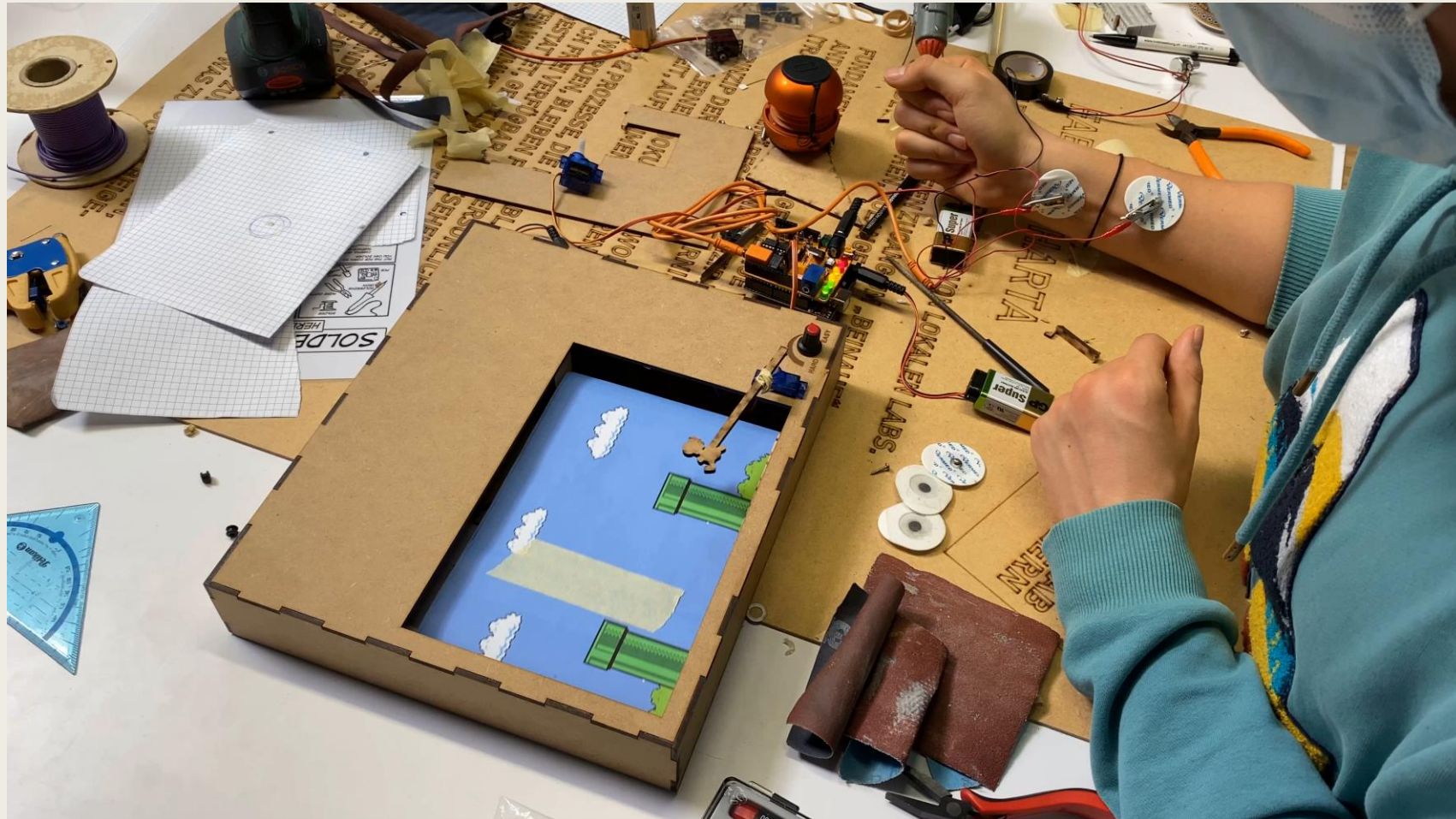
Hack 0: Muscle SpikerShield



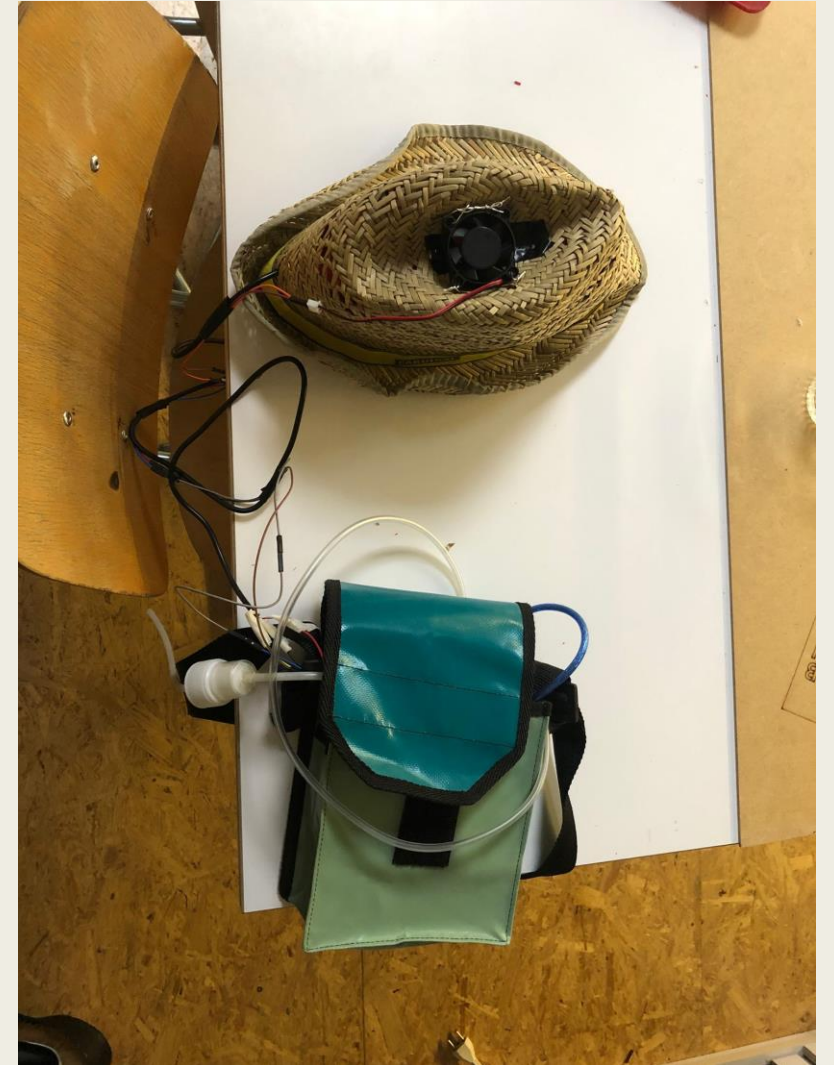
Hack 1: Flappy Dino World



Hack 1: Flappy Dino World



Hack 2: künstliche Schweissdrüse



Hack 2: künstliche Schweissdrüse

```
//ausgeben der Temperatur auf dem seriellen Monitor
printValue(tempC, "°C");
//wenn die aktuelle Temperatur grösser als die gespeicherte dann soll das Relais ausgelöst werden
if(MIN_TEMP < tempC){
    digitalWrite (relaisModulVenti, 0);
    digitalWrite (relaisModul, 0);
    Serial.print("sollte laufen");
    delay(1000);
    digitalWrite(relaisModul, 1);
    Serial.print("vordelay1s");
    delay(5000);
    Serial.print("nach delay1s");

} else {
    digitalWrite (relaisModulVenti, 1);
    digitalWrite(relaisModul, 1);
    Serial.print("else");
}
```

