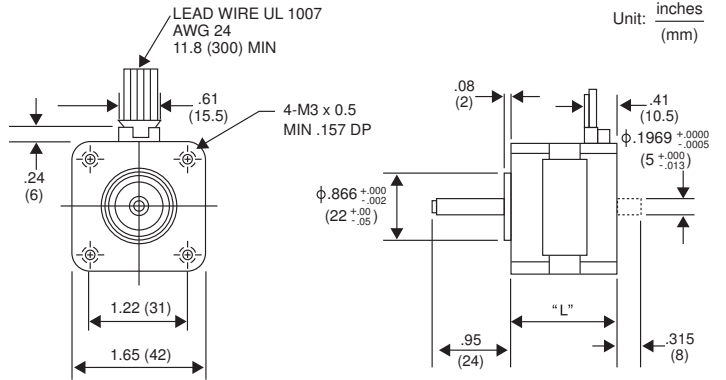
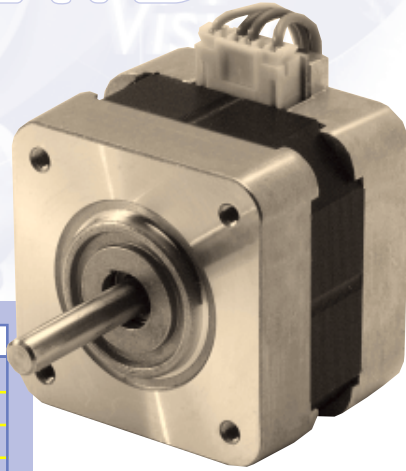


17PM-K 1.8° HYBRID

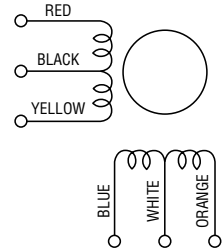


P/N	"L"
17PM-K0XX	1.34 (34)
17PM-K3XX	1.50 (38.1)
17PM-K1XX	1.57 (42.1)
17PM-K4XX	1.85 (47)

GENERAL SPECIFICATIONS

Step Angle 1.8°
 Step Angle Accuracy +/-5%
 Temperature Rise 80° C Max.
 Ambient Temperature Range -20° to +50° C
 Insulation Resistance 100MΩ Min., 500 VDC
 Dielectric Strength 500 VAC for 1 min.
 Radial Play 0.02 mm Max. (450 g-load)
 End Play 0.08 mm Max. (450 g-load)
 Switching Sequence See page 31

WINDING DIAGRAM



MODEL SPECIFICATIONS

Model Number	Rated Voltage V	Rated Current/ Phase A	Winding Resistance/ Phase Ω	Holding Torque g-cm	Inductance mH	Rotor Inertia g-cm ²	Detent Torque g-cm	Weight g
17PM-K016V	8.80	0.40	22.00	1,500	19.5	34.0	80	200
17PM-K017V	4.40	0.80	5.50	1,500	5.7	34.0	80	200
17PM-K018V	3.00	1.20	2.50	1,500	2.8	34.0	80	200
17PM-K316V	9.60	0.40	24.00	1,700	25.8	45.0	100	250
17PM-K301V	4.80	0.80	6.00	1,700	7.1	45.0	100	250
17PM-K303V	3.20	1.20	2.70	1,700	3.3	45.0	100	250
17PM-K111V	10.00	0.40	25.00	2,200	33.4	56.0	120	300
17PM-K101V	5.00	0.80	6.20	2,200	8.6	56.0	120	300
17PM-K103V	3.60	1.20	3.00	2,200	4.4	56.0	120	300
17PM-K402V	6.00	0.80	7.50	3,400	7.0	75.0	200	350